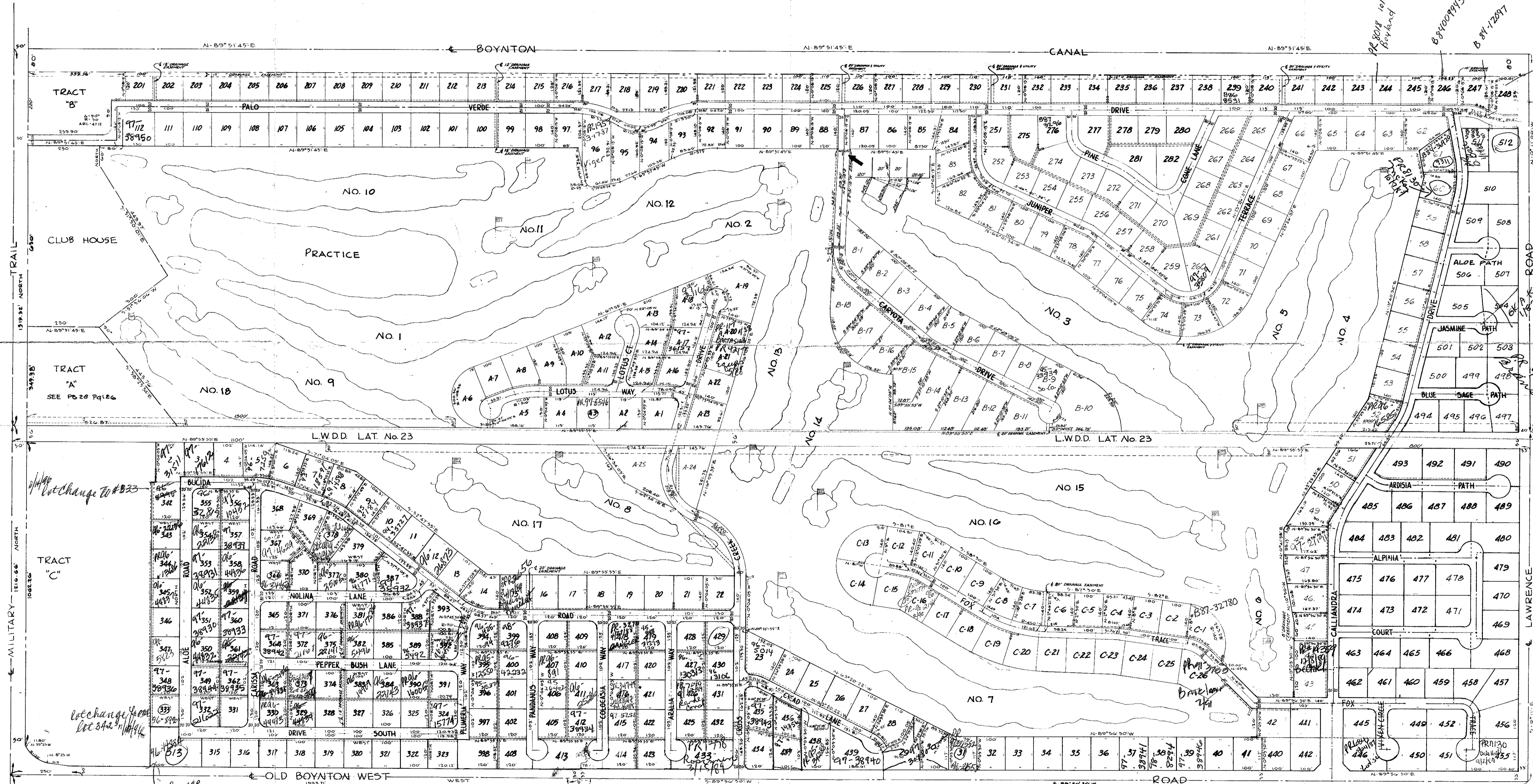


A MAP OF
CYPRESS CREEK DEVELOPMENT
 IN SEC. 24 TWP. 45 S RGE. 42 E.
 PALM BEACH COUNTY, FLA.
 NOV. 1963 SCALE: 1"=200'
 LATEST AMENDMENT, DECEMBER 1985
 PREPARED BY: MOCK, ROOS & ASSOC., INC.



Lot 511 - B88-5338
 40 34 PALO VERDE DR

SCALE: 1"=200'

RECEIVED
 APR-9 1986
 LAND DEVELOPMENT
 PALM BEACH COUNTY

DATE OF
 MAR 20 1986

ur0280.igr
 CYPRESS CREEK

0233-000

Lot 436 + 437
 UNIT 0 - FILE -
 Plat Waver